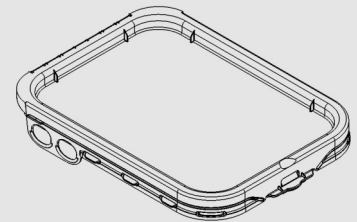


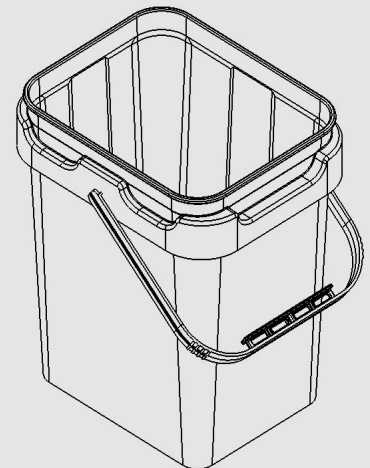
### Cover Specification

Origin of Materials	100% US Manufactured
Material	Polypropylene
Mfg. Method	Injection Molding
Weight	0.28 lbs / 130 g
Height	1 1/8"
Min Wall Thickness	.045"
Top Outside Diameter	7 3/4" / 9 5/8"
Gasket	Dry Seal
Standard Color	White <i>Please inquire about custom colors</i>
Case Quantity	144/Box, 1152/Pallet



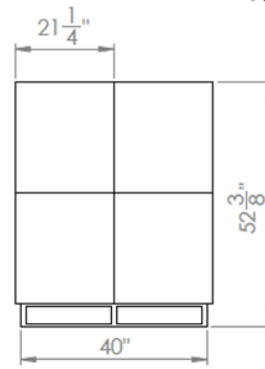
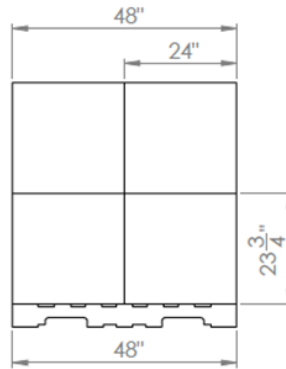
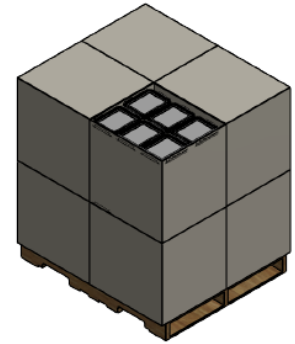
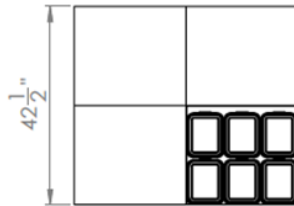
### Pail Specification

Origin of Materials	100% US Manufactured
Material	Polypropylene ( <i>Clarified Optional</i> ) <i>Plastic Handle</i>
Mfg. Method	Injection Molding
Weight	0.80 bs / 362g
Min. Wall Thickness	.050"
Exterior Height	11" / With Cover 11 1/4"
Top Outside Diameter	7 1/2" / 9 3/8"
Bottom Outside Diameter	6 1/4" / 7 7/8"
Shipping Quantity	425 Units/Pallet 15, 840 Units/Truckload
Standard Color	White <i>Please inquire about custom colors</i>
Print Area Decoration	9" x 30 5/8" In Mold Labeling (IML) <i>360° Unobstructed Real Estate</i> <i>Below Beam to Bottom Edge Including Corners</i>
Top Load Rating	100 lbs.



**Pack Specifications For Cover**

- 1152 Units
- 144 per Box
- 4 Boxes per Layer x 2 High
- Lid Material is PP



**Pack Specifications For Pail**

- 425 Units
- 25 Stacks x 17 High
- 15,840 Units per Truckload
- Pail Material is PP

