



M&M  
INDUSTRIES

# PACKAGING SOLUTIONS GUIDE





# MISSION

**PIONEERING AND DELIVERING  
IMAGINATIVE PACKAGING  
SOLUTIONS DRIVEN BY OUR  
PASSION TO SERVE**



# Contents

- COMPANY OVERVIEW . . . . .2**
- SUPER KUBE. . . . .4**
- REVOLUTIONARY PAIL. . . . .6**
- LIFE LATCH® NEW GENERATION. . . . .8**
- LIQUID UN-CERTIFIED WITH REMOVABLE COVER . . . . .9**
- LITE-LATCH . . . . .10**
- M-SERIES TRADITIONAL PAILS . . . . .12**
- PLASTIC DRUMS . . . . .14**
- LIFE LATCH® SQUARE PAILS . . . . .16**
- CUSTOM DESIGN SOLUTIONS . . . . .18**

M&M Industries, Inc. is a US-based Packaging Solution Manufacturer founded in Chattanooga in 1986 by Glenn Morris, Sr. Today, the company is owned and operated by his son, Glenn Morris, President and CEO.

M&M holds multiple patents and has several hundred employees at their manufacturing plants in the Southeast and Southwest US that are committed to excellent customer service, world class quality and supporting the local community.

M&M keeps energy conservation and waste reduction mindful of global environmental damage on the forefront. Daily focus is used on identifying and recycling all materials throughout their manufacturing facilities.

M&M manufactures various Round and Modular Pail Lines that provide a feel of quality and protection for the integrity of all types of products.

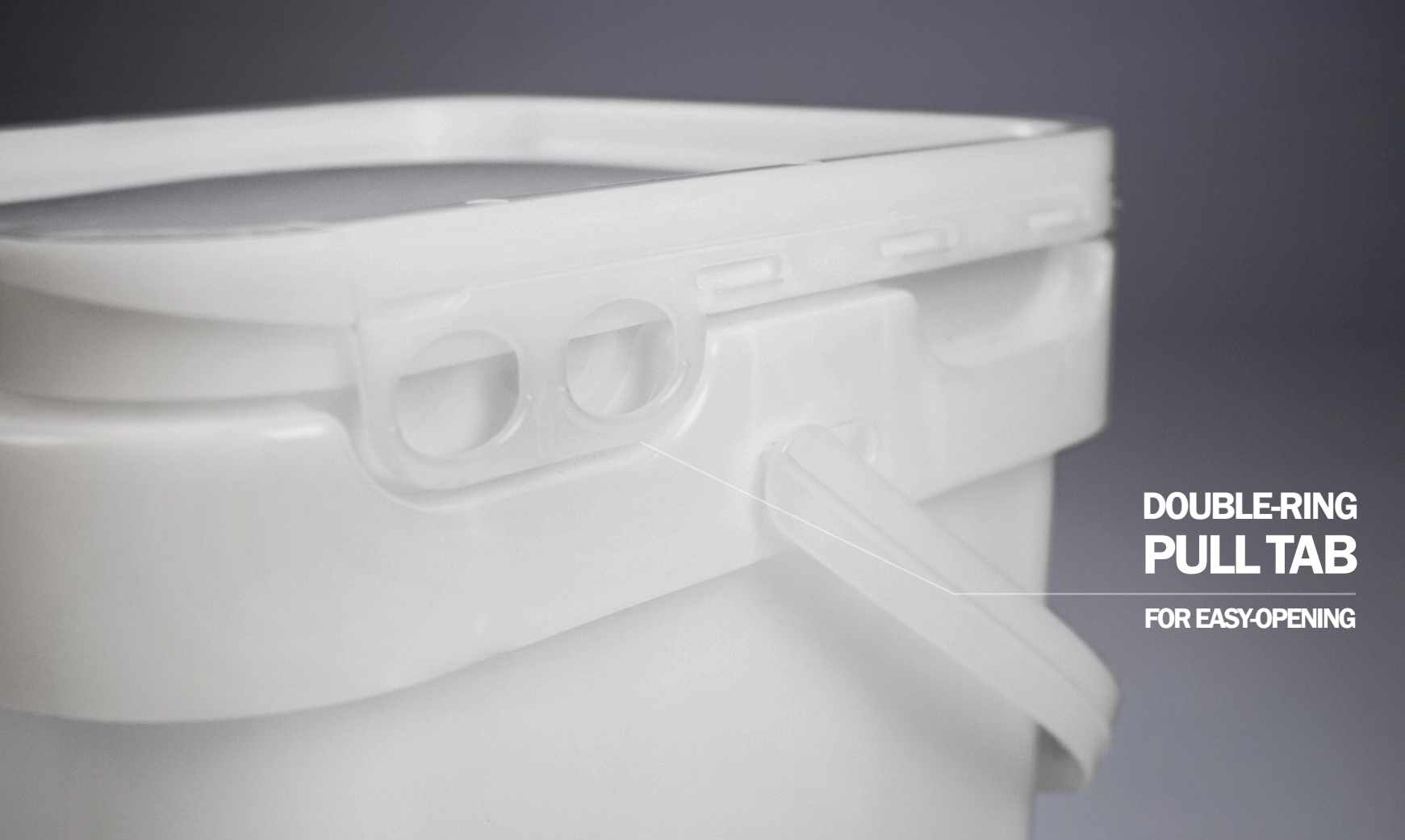
M & M continuously strives to improve products and manufacturing processes to completely satisfy the needs and expectations of each customer.



# VALUES

- ALLIANCES FOR LIFE — USE EACH OPPORTUNITY TO EARN PROFOUND TRUST**
- DO THE RIGHT THING — MODEL CHRISTIAN VALUES AND PRINCIPLES IN OUR WORK**
- TEAMWORK — RESPECTFUL COLLABORATION; STRENGTHENING EACH OTHER**
- DELIBERATE URGENCY — QUICK AND FLEXIBLE; DELIVERING TO THE NEEDS OF OTHERS**





**DOUBLE-RING  
PULL TAB**  
FOR EASY-OPENING



TOP VIEW

**POLYPROPYLENE  
PAIL PERFECTION**

A LIGHTWEIGHT PAIL  
FOR GENERAL USE WHILE  
PROVIDING SECURE  
PRODUCT PROTECTION



**SUPER KUBE**

- COST-EFFECTIVE
- LIGHTWEIGHT
- FDA-GRADE
- STANDARD COLOR - WHITE/CLEAR (COLORS OFFERED)
- EASY-POUR BOTTOM GRIPS
- TAMPER-EVIDENT, HINGED COVER WITH EASY-OPEN TEAR BAND
- TAPERED WALLS FOR NESTING
- CHILD-RESISTANT/SENIOR-FRIENDLY OPTIONS FOR SPECIFIC SIZES
- IN-MOLD LABELING AVAILABLE

**A VERSATILE, COST-EFFECTIVE,  
FDA-GRADE, POLYPROPYLENE  
PAIL THAT IS LIGHTWEIGHT  
AND IDEAL FOR GENERAL USE**



**GALLON SIZES AVAILABLE**

| GALLONS     | 1.0    | 2.0    | 4.0    | 5.0    | 9.0    |
|-------------|--------|--------|--------|--------|--------|
| PAIL STYLE  | 500487 | 500488 | 500472 | 500471 | 500479 |
| COVER STYLE | 600757 | 600758 | 600716 | 600716 | 600782 |



# REVOLUTIONARY PAIL

- A GRIP-AND-RIP TEAR-TAB WITH LIFT-OFF COVER
- DESIGNED FOR REUSE WITH 1/4-TURN RESEALABLE COVER
- FDA-GRADE RAW MATERIALS
- HIGH-DENSITY POLYETHYLENE (HDPE)
- TAPERED WALLS FOR NESTING
- DECORATION AVAILABLE

PLASTIC OR  
METAL  
HANDLE



1/4-TURN  
RESEALABLE  
COVER

THE TRADITIONAL PAIL  
HAS CHANGED  
FOREVER



DOUBLE-RING  
PULL TAB  
FOR EASY-OPENING

## A REVOLUTIONARY PAIL DESIGNED FOR REUSE

The two-in-one, press-on cover is easy to **open** and **reseal** featuring 1/4-turn technology



GALLON SIZES AVAILABLE

|             |        |
|-------------|--------|
| GALLONS     | 5.0    |
| PAIL STYLE  | 500391 |
| COVER STYLE | 600591 |





**UN-CERTIFIED**  
FOR SOLIDS GROUPS II AND III

## LIFE LATCH® NEW GENERATION

### USER-FRIENDLY SCREW-TOP PAILS

PROVIDES ULTIMATE PROTECTION FOR YOUR PRODUCTS



THUMB  
LEVER



- PATENTED “NO GASKET COVER” ALLOWS PRODUCTS TO BREATHE (AVAILABLE WITH GASKET)



#### GALLON SIZES AVAILABLE

| GALLONS                          | 0.6    | 1.25   | 2.0    | 2.5    | 3.5    | 5.0    | 5.9    | 6.5    | 7.2    | 12     |
|----------------------------------|--------|--------|--------|--------|--------|--------|--------|--------|--------|--------|
| PAIL STYLE #                     | 500000 | 500013 | 520045 | 500357 | 500041 | 500071 | 500125 | 500128 | 512885 |        |
| WHITE COVER #                    | 600007 | 600052 | 600129 | 600129 | 600137 | 600137 | 600137 | 600137 | 600137 |        |
| NEW GENERATION DRUM PAIL STYLE # |        |        |        |        |        |        |        |        |        | 500034 |
| WHITE COVER #                    |        |        |        |        |        |        |        |        |        | 600103 |



**UN-CERTIFIED**  
FOR SOLIDS GROUPS II AND III  
FOR LIQUIDS GROUPS II AND III

- MOISTURE-RESISTANT, AIR-TIGHT SEAL
- FDA-GRADE RAW MATERIALS
- TAMPER EVIDENT
- DECORATION AVAILABLE



POUR  
Spout  
COVER

## LIQUID UN-CERTIFIED WITH REMOVABLE COVER



#### GALLON SIZES AVAILABLE

| GALLONS                       | 5.0    |
|-------------------------------|--------|
| PAIL STYLE #                  | 500109 |
| NON-SPOUTED LID WHITE COVER # | 600237 |
| SPOUTED LID WHITE COVER #     | 600238 |





**THE PERFECT PAIL WHEN  
LESS PLASTIC IS REQUIRED  
THE EASIEST 1/4 TURN YOU  
WILL EVER OPEN, RECLOSE  
AND RESEAL**



**UN-CERTIFIED**  
FOR SOLIDS GROUPS II AND III



**SIMPLE LID-LOCK RELEASE**

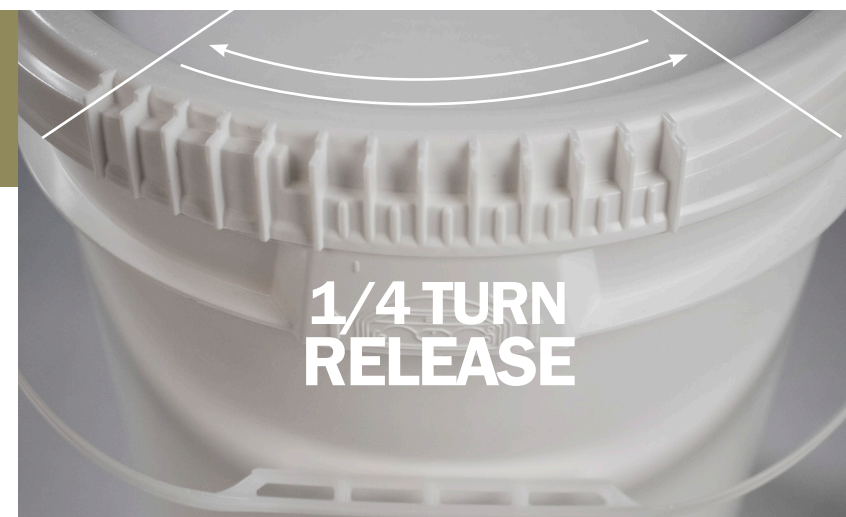
**EASY  
TO OPEN**

**EASY-GRIP  
CONSTRUCTION**



- FDA-GRADE RAW MATERIALS
- TAMPER EVIDENT
- CHILD-RESISTANT / SENIOR-FRIENDLY
- DECORATION AVAILABLE

**LITE LATCH®**



**1/4 TURN  
RELEASE**



**GALLON SIZES AVAILABLE**

| GALLONS       | 1.0    | 2.0    | 2.5    | 3.0    | 3.5    | 5.0    | 6.5    | 7.7    | 10.7   | 12     |
|---------------|--------|--------|--------|--------|--------|--------|--------|--------|--------|--------|
| PAIL STYLE #  | 500145 | 500147 | 500150 | 500153 | 500155 | 500159 | 500164 | 500500 | 500495 | 500498 |
| WHITE COVER # | 600276 | 600282 | 600282 | 600249 | 600249 | 600249 | 600249 | 600826 | 600784 | 600791 |





# M-SERIES TRADITIONAL PAILS



### M2 - PAINT, CHEMICALS

- GRIP-AND-RIP TEAR TAB
- METAL OR PLASTIC HANDLES
- FDA-GRADE RAW MATERIALS
- DECORATION AVAILABLE

### M4 - HAZARDOUS, UN-CERTIFIED

- PRESS-ON COVER
- METAL OR PLASTIC HANDLES
- FDA-GRADE RAW MATERIALS
- DECORATION AVAILABLE
- FITTINGS AVAILABLE

**A PAIL DESIGNED FOR  
MAXIMUM QUALITY,  
MAXIMUM VALUE AND  
MAXIMUM DEPENDABILITY**



**GRIP  
AND RIP  
TEAR TAB**

### GALLON SIZES AVAILABLE

|    | GALLONS       | 1.0    | 2.0    | 3.5    | 4.25   | 5.0     | 5.3    | 5.5     | 6.5    |
|----|---------------|--------|--------|--------|--------|---------|--------|---------|--------|
| M2 | PAIL STYLE #  | 500311 | 500325 | 500172 | 500339 | 500191  | 500294 | 500194  | 500282 |
|    | WHITE COVER # | 600482 | 600497 | 600437 | 600437 | 600437  | 600437 | 600437  | 600437 |
| M4 | PAIL STYLE #  |        |        |        |        | 500222  |        | 500229  |        |
|    | WHITE COVER # |        |        |        |        | 600298  |        | 600298  |        |
|    |               |        |        |        |        | Spouted |        | Spouted |        |



**UN-CERTIFIED**  
FOR SOLIDS GROUPS II AND III  
FOR LIQUIDS GROUPS II AND III





**JUST BECAUSE IT IS LARGE,  
DOESN'T MEAN IT SHOULDN'T  
BE EASY TO OPEN, RECLOSE,  
AND RESEAL...EVERY TIME**

**CHILD  
RESISTANT  
SENIOR  
FRIENDLY**



## PLASTIC DRUMS



**UN-CERTIFIED**  
FOR SOLIDS GROUPS II AND III

**THIS DRUM IS  
USER-FRIENDLY**



- MOISTURE-RESISTANT, AIR-TIGHT SEAL
- FDA-GRADE RAW MATERIALS
- TAMPER EVIDENT
- PATENTED "NO GASKET COVER"  
ALLOWS THE PRODUCTS TO BREATHE
- DECORATION AVAILABLE



### GALLON SIZES AVAILABLE

| GALLONS               | 7.7    | 10.7   | 12     |
|-----------------------|--------|--------|--------|
| NEW GENERATION SERIES |        |        |        |
| PAIL STYLE #          |        |        | 500034 |
| WHITE COVER #         |        |        | 600103 |
| LITE LATCH SERIES     |        |        |        |
| PAIL STYLE #          | 500500 | 500495 | 500498 |
| WHITE COVER #         | 600723 | 600723 | 600791 |



# LIFE LATCH® SQUARE PAILS

WHEN YOUR PACKAGE REQUIRES SUPERIOR EASE OUR SECURE LATCH IS PERFECT



DOUBLE-RING  
PULL TAB  
FOR EASY-OPENING

- FDA-GRADE RAW MATERIALS
- CHILD-RESISTANT / SENIOR-FRIENDLY
- TAMPER-EVIDENT
- DECORATION AVAILABLE



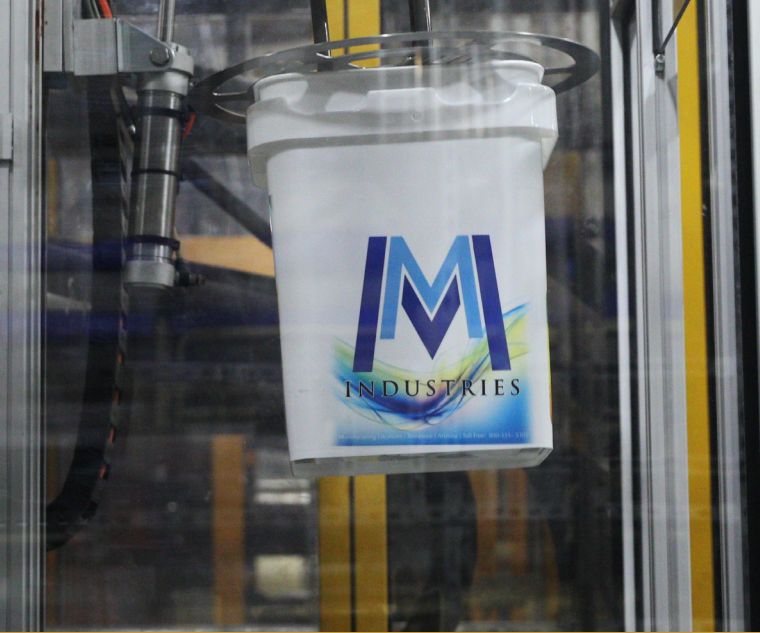
UN-CERTIFIED  
FOR SOLIDS GROUPS II AND III



## GALLON SIZES AVAILABLE

| GALLONS       | 3.5    | 4.0    | 5.0    | 6.5    |
|---------------|--------|--------|--------|--------|
| PAIL STYLE #  | 500492 | 500443 | 500410 | 500367 |
| WHITE COVER # | 600646 | 600646 | 600646 | 600646 |





M&M holds over 20 patents in the U.S. as well as other countries for packaging design and development. We are EAGER to help you bring your package to the market for you and your customer, and we love helping you grow the value of your company.

M&M invests an extraordinary amount of time in our relations with packaging distributors all over the world. From a single jar to bulk containers, we can help you find what you need and our custom package designs services will help you make the right first impression with your customers.



## CUSTOM PACKAGING DESIGN



**CUSTOM COLORS**



**HEAT TRANSFER LABELING**

**MIX & MATCH COVERS**



**IML LABELING**

**8-COLOR PRINTING**







WE LOOK FORWARD  
TO DISCUSSING YOUR  
PACKAGING SOLUTION  
NEEDS

**Contact Us**



**PHONE**

CALL TOLL-FREE  
1-800-331-5305



**WEB**

[MMPAILS.COM](http://MMPAILS.COM)



**CORPORATE  
ADDRESS**

316 CORPORATE PLACE  
CHATTANOOGA, TN 37419